

GTLED LIGHTS

High Mast Umbrella Light

Innovative specification grade fixtures
utilizing today's most energy efficient
light sources



GT LED LIGHTS

High Mast Umbrella Light

In addition to meeting the needs of people's leisure and entertainment, the installation of high pole lights will also be an important landscape and a must for civilized society. The installation of high pole lights as a cultural place has become a symbol of the level of civilization of a unit, a city and even a country. External night lighting is the use of lighting to shape the night image of the building, thus showing the unique artistic style of the building under the night. It shows the unique cultural connotation and artistic characteristics of the building. Choose a reasonable facade lighting method to control the lighting area and reduce power consumption. Handle various indicators such as illuminance, light color, color rendering, three-dimensionality, texture, flash, glare limitation. Pay attention to spatial clarity, eliminate unnecessary shadows, and control the adverse effects of light and ultraviolet radiation on people and things. Create appropriate brightness distributions and illuminance levels, limit glare, and reduce irritability. Natural light should be used effectively. Requirements for the pole: The top of the lift-type high pole lamp is equipped with a lightning rod, a rain cover, a 60-degree distributed pulley block and a 120-degree distributed hook system. The rain cover prevents rainwater from entering the inside of the pole and prevents parts such as lifting pulleys from being exposed to rain and rust. The pulley block is used to avoid wire rope and cable grooving. The design of the hooking system is very reasonable. When the lamp panel is lowered, the lifting system can be operated to automatically flip the hook to ensure safe and reliable unloading of the wire rope after the lifting operation is completed, and the service life of the wire rope is prolonged.

In the rectangular inner cavity at the bottom of the lift type high pole light, a lifting system such as a motor is installed in addition to the electrical control system. The electrical control system is installed inside the pole to avoid the malfunction of the lifting movement caused by the harsh outdoor environment.





Pole Specifications

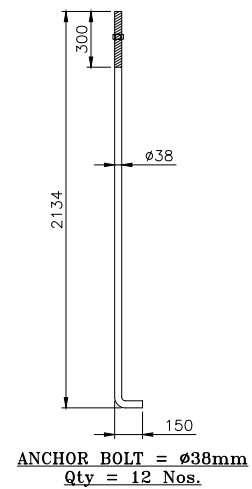
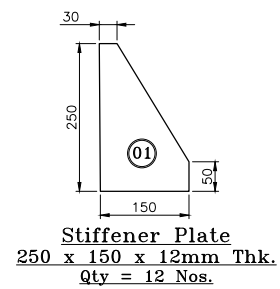
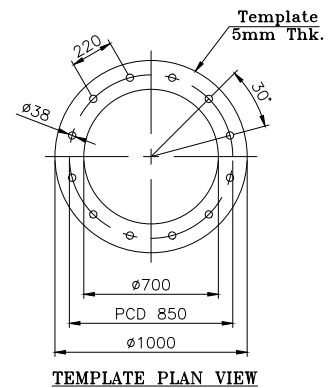
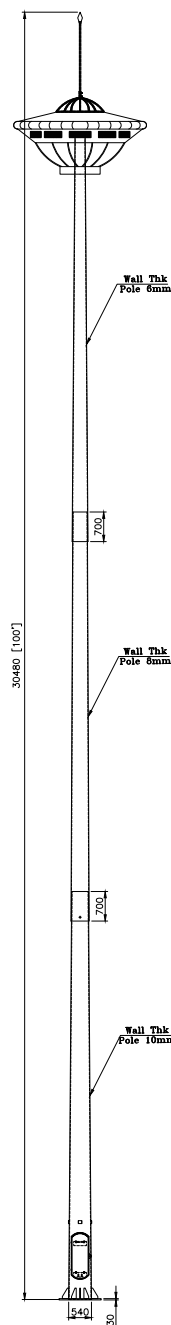
Item Code:	GTZSTYD0831
Height (Meter):	30
Material:	Q235/A36 steel model Following ASTM A 123, $\phi 300\text{mm}-\phi 600\text{mm}$
Minimum Yield Strength:	345n/mm ²
Depth of Pole:	$\delta 6\text{mm}, \delta 8\text{mm}, \delta 10\text{mm}$
Surface Treatment:	Hot Dip Galvanized/Powder Coating, lifting of electrostatic spraying system containing embedded parts
Shape:	Polygonal
Lifting system :	Lifter fixed in the inner of the pole with lifting speed of 3~5 meter per minute
Design of Pole :	Against Earthquake of 8 grade.
Wind Speed withstand :	160km/Hr
Parts of Poles:	3 Sectional pole

LED Light Specifications

Item Code:	GTMFL
Total System Consumption (W):	600-750W
Working Voltage:	AC 100 ~277v
Power Factor:	>0.95
Total Harmonic Distortion(THD):	< 15%
Driver & Driving Current:	LG/Meanwell, Constant current Driver
Luminair Luminous Flux(Lm):	Max 65000
LED Chip used:	Cree(USA Origin)/Nichia (Japan)
Color Temperature:	Warm White, Natural White, Cool White
Beam Angle:	120°
Working Temperature:	-40 °C ~+55 °C
Working Relative Humidity:	10-90%
CRI:	>70
Classifications:	IP 65, IK08
Surge Protection:	4KV inbuilt Driver, 10KV Additional
Fixture Material:	Housing: Die Cast Aluminum Gasket: Heat Resistant Silicon Rubber Glass: Toughened Glass
Installation:	Bracket (Wall, Ceiling, Ground)
Fixture Color:	Silver
Life Span:	> 50,000 hours (70% lumen maintenance @Ta=35°C)
Product weight:	24.6 Kg

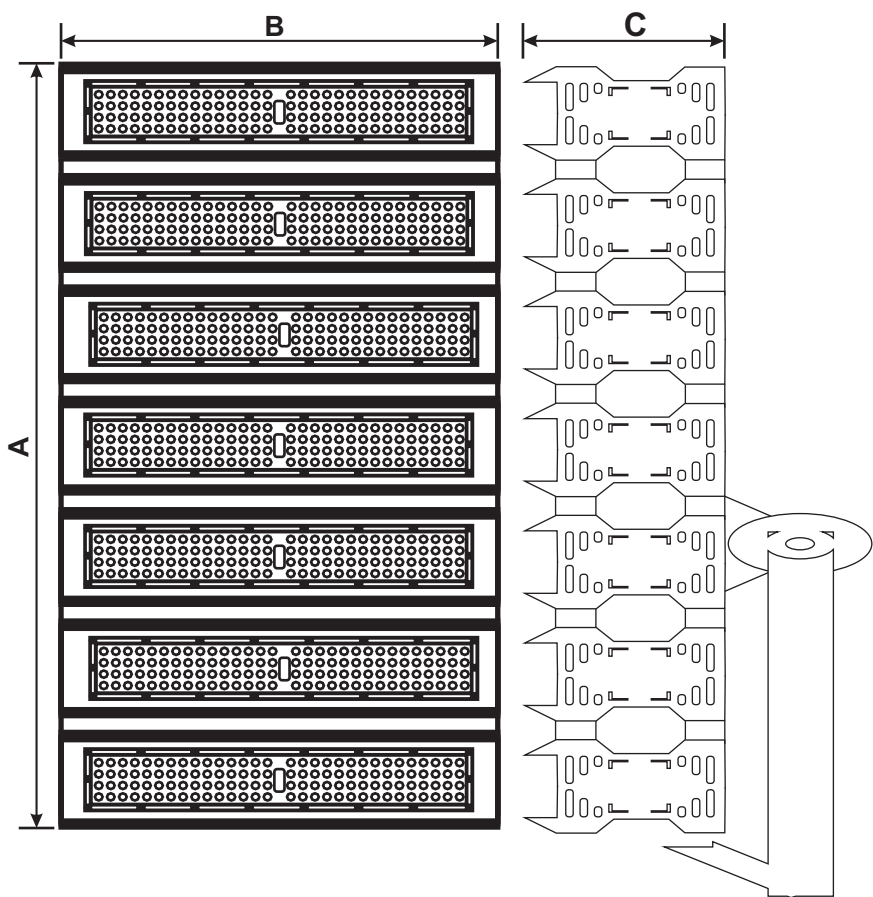


Pole Dimension





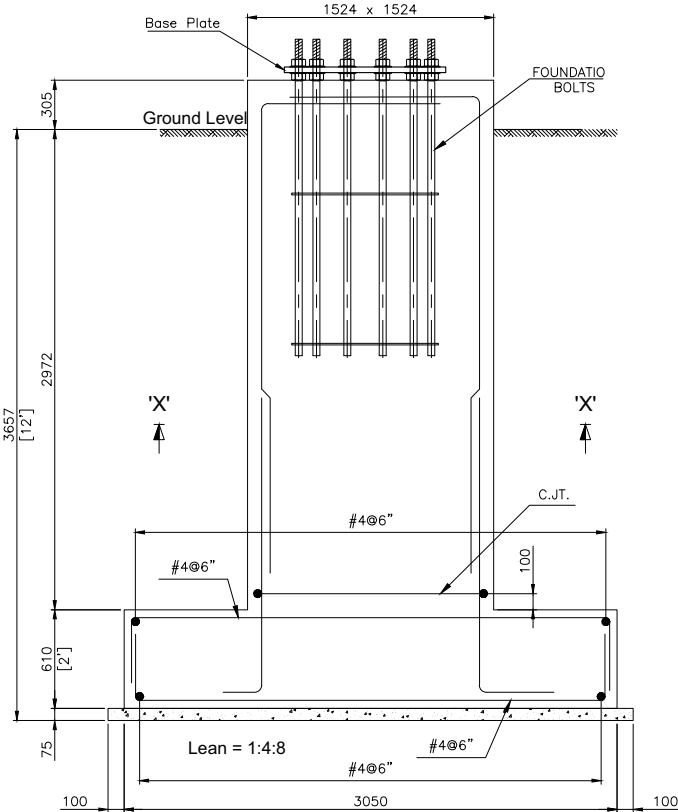
Light Dimension



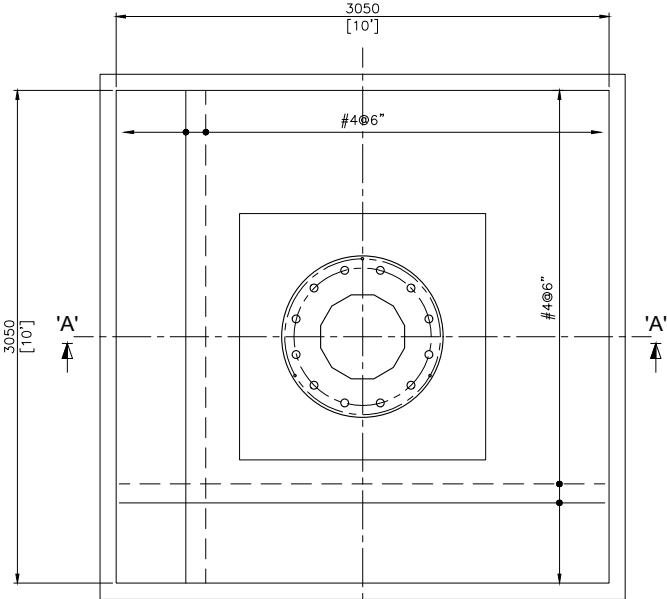
	GTMFL220	GTMFL330	GTMFL440	GTMFL550	GTMFL660	GTMFL770
A	234 mm	351 mm	468 mm	585 mm	702 mm	823 mm
B	413 mm	413 mm	413 mm	413 mm	413 mm	413 mm
C	90 mm	90 mm	90 mm	90 mm	90 mm	90 mm



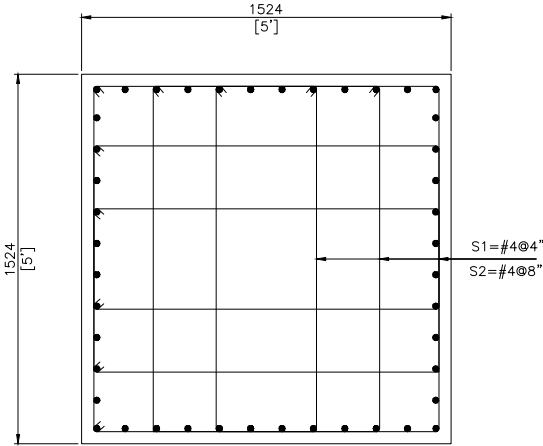
Pole Foundation Detail



SECTION = 'A' - 'A'



F-1 FOOTING PLAN



SECTION = 'X' - 'X'



GetTechnologiesTM

GET TECHNOLOGIES

24 Km Main Ferozepur Road Opposite Total Petrol Pump Kahna Lahore.
www.gettechnologies.com | sales@getgroup.pk | ++92 42 111000179